

The background is a stylized landscape. At the top, a large yellow sun is in the upper right corner against a light blue sky with soft, wavy horizontal bands of color. Below the sky, there are green mountains and several dark green, triangular evergreen trees. The overall style is flat and modern.

# ANGEL FIRE

## AMENITIES & IMPROVEMENTS PROJECT

Presentation to the Members of AAFPO

# TABLE OF CONTENTS

## 01 OLYMPIC PARK

Planned improvements to  
Olympic Park, Pickleball Courts

## 02 NEW SKI LIFT

New high-speed lift on front  
side of the ski mountain

## 03 FINANCING

How the Project will be  
Financed

## 04 AAFPO APPROVED PLAN

AAFPO's Announcement to  
members on the project



# AAFPO VOTED TO CONTRIBUTE FUNDS TOWARD IMPROVEMENTS TO OLYMPIC PARK

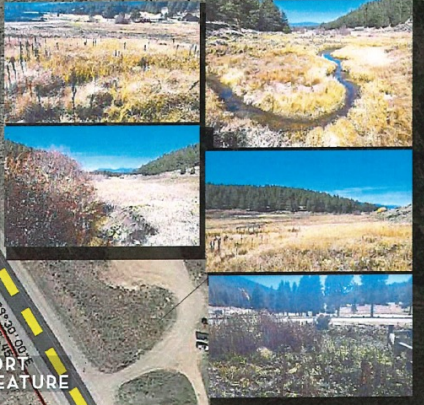
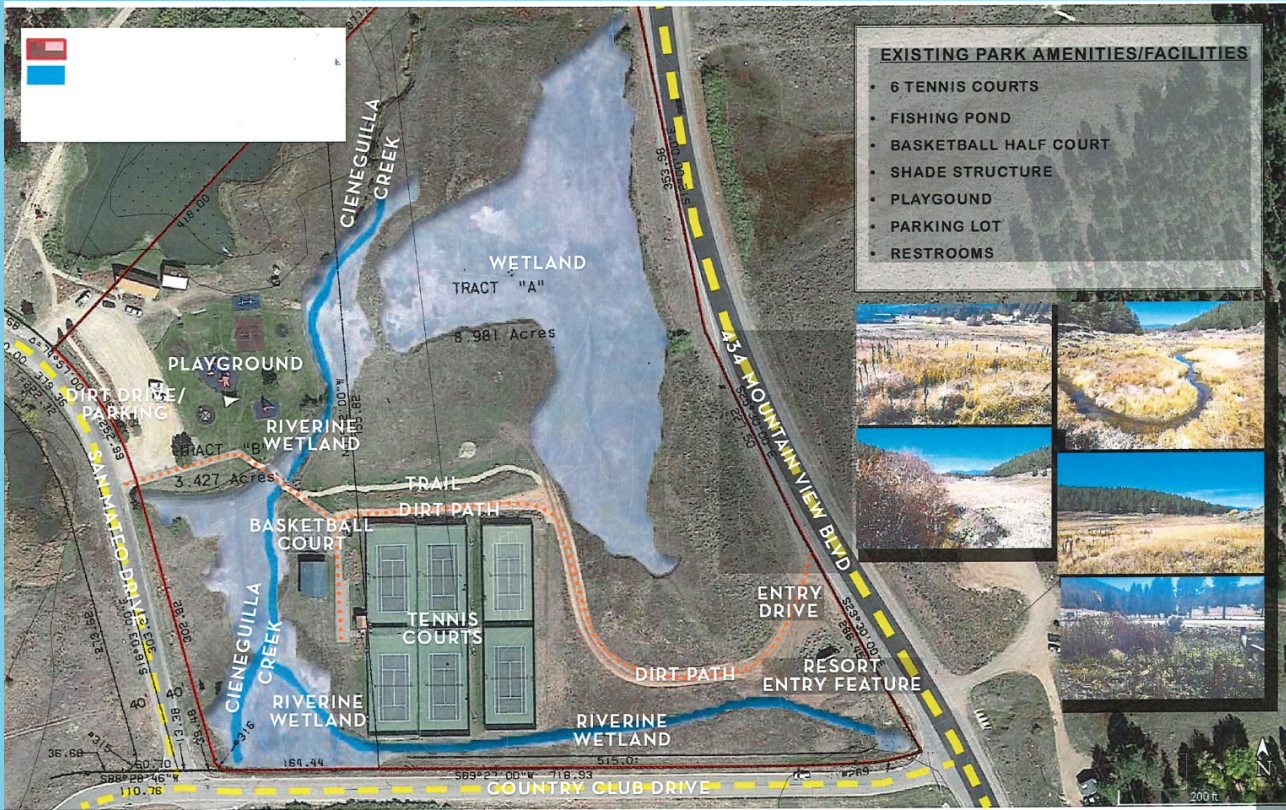
AAFPO voted to fund improvements to the new Olympic Park to include

1. Add Pickleball as an Amenity, avoiding fees to Members for use
2. 8 Pickleball Courts
3. Pro Shop
4. Splash Pad
5. New Parking (53 Spaces)
6. Trash Enclosure
7. Landscaping Enhancements
8. Shade Structures at Pickleball
9. Disc Golf Course



# Angel Fire Olympic Park

COMPLEX





# Angel Fire Olympic Park

COMPLEX



## OVERALL AMENITIES

### EXISTING:

- E1 TENNIS COURTS
- E2 FISHING POND
- E3 BASKETBALL HALF COURT
- E4 STRUCTURE
- E5 PLAYGROUND FACILITY
- E6 WESTERN PARKING LOT
- E7 RESTROOMS
- E8 PAVILION
- E9 BOUNDARY FENCING
- E10 SITE FURNISHINGS
- E11 PEDESTRIAN WALKWAYS
- E12 LANDSCAPE & IRRIGATION

### PROPOSED:

- P1 PICKLEBALL COURTS
- P2 PRO SHOP - F&B SERVICE WINDOW
- P3 SPLASH PAD
- P4 NEW PARKING (53 SPACES)
- P5 TRASH ENCLOSURE
- P6 LANDSCAPING ENHANCEMENTS
- P7 SHADE STRUCTURES AT PICKLEBALL
- P8 DISC GOLF COURSE



MATCH DETAILING OF RESORT SIGNAGE. SCALE AS APPROPRIATE

# Angel Fire Olympic Park



## LANDSCAPE CONCEPT

LOW MAINTENANCE NATIVE AND LOW-WATER USE PLANT MATERIALS  
TREES FOR SHADE AND WIND BREAKS  
PERMEABLE PAVING WHEN FEASIBLE

## PLANT PALETTE

### TREES (ONE INCH CALIPER MIN.)

POPULUS TREMULOIDES - QUAKING ASPEN  
PINUS FLEXILIS - LIMBER PINE  
PINUS NIGRA - AUSTRIAN BLACK PINE  
PURPLE LEAF PLUM - PRUNUS CERASTIFERA

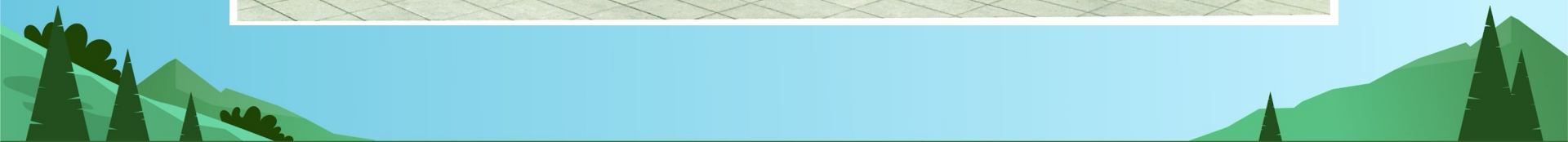
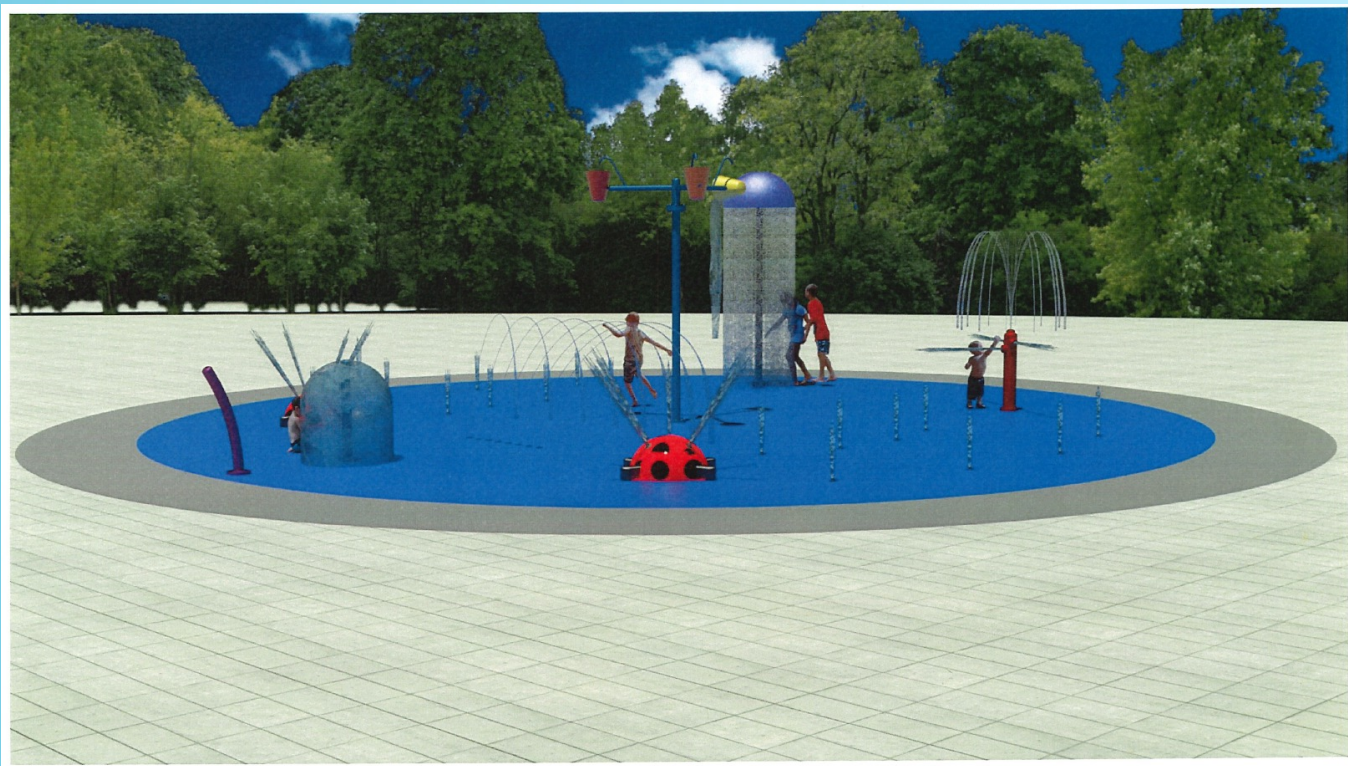
### SHRUBS (FIVE GALLON MIN.)

CALMAGROSTIS X ACUTIFLORA - KARL FOERSTER GRASS  
POTENTILLA FRUTICOSA 'JACKMAN'  
FALLUGIA PARADOXA - APACHE PLUME  
CHRYSOETHAMNUS NAUSEOSUS - CHAMISA  
ROSA SPP. - KNOCK-OUT ROSE  
PINUS MUGO MUGO - MUGHO PINE

### NATIVE SEED MIX

ARTEMESIA FRIGIDA - PRAIRIE SAGEWORT  
CHRYSOETHAMNUS VISCIDIFLORES - YELLOW RABBITBRUSH





# NEW HIGH-SPEED CHAIR LIFT

The new high-speed chair lift

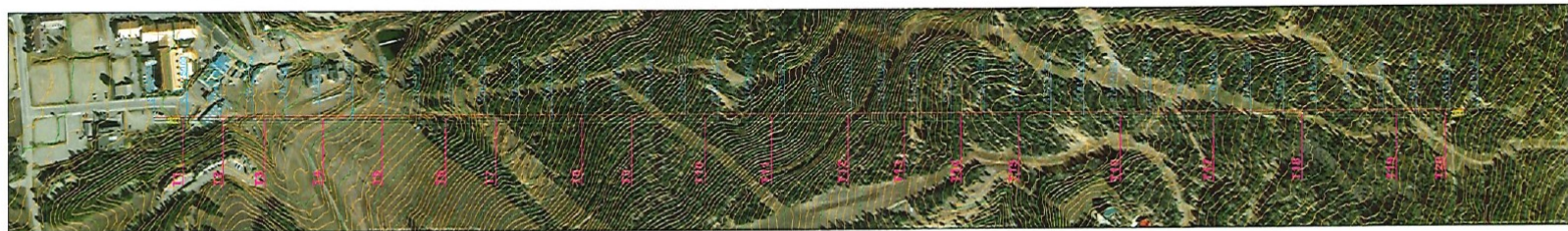
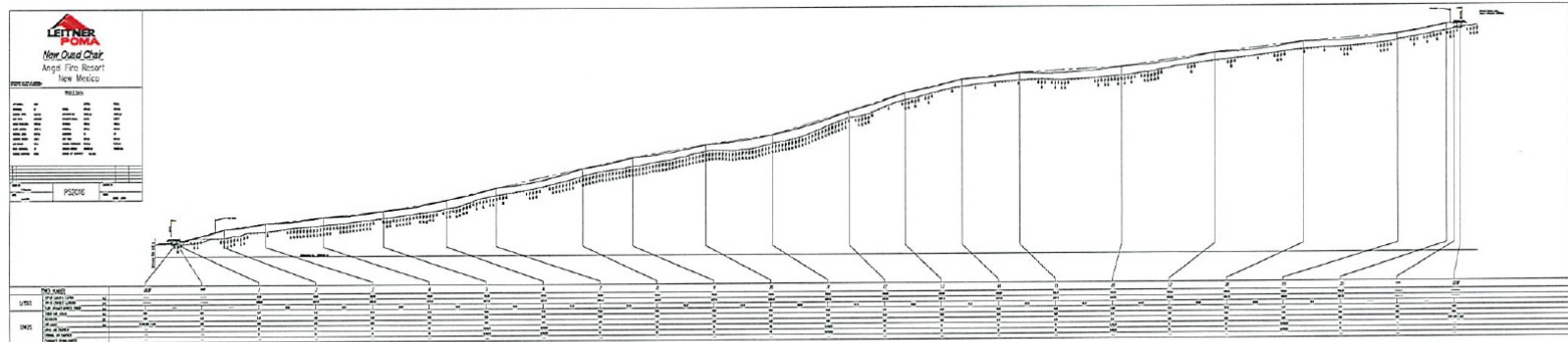
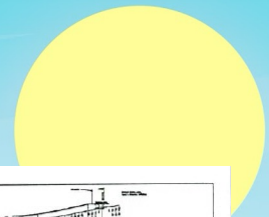
1. Will alleviate overcrowding on Chile Express
2. Will spread skier traffic out across front-side of mountain
3. Terminate at top of the front side blue runs to provide easier access and reduce congestion at top of Heading Home







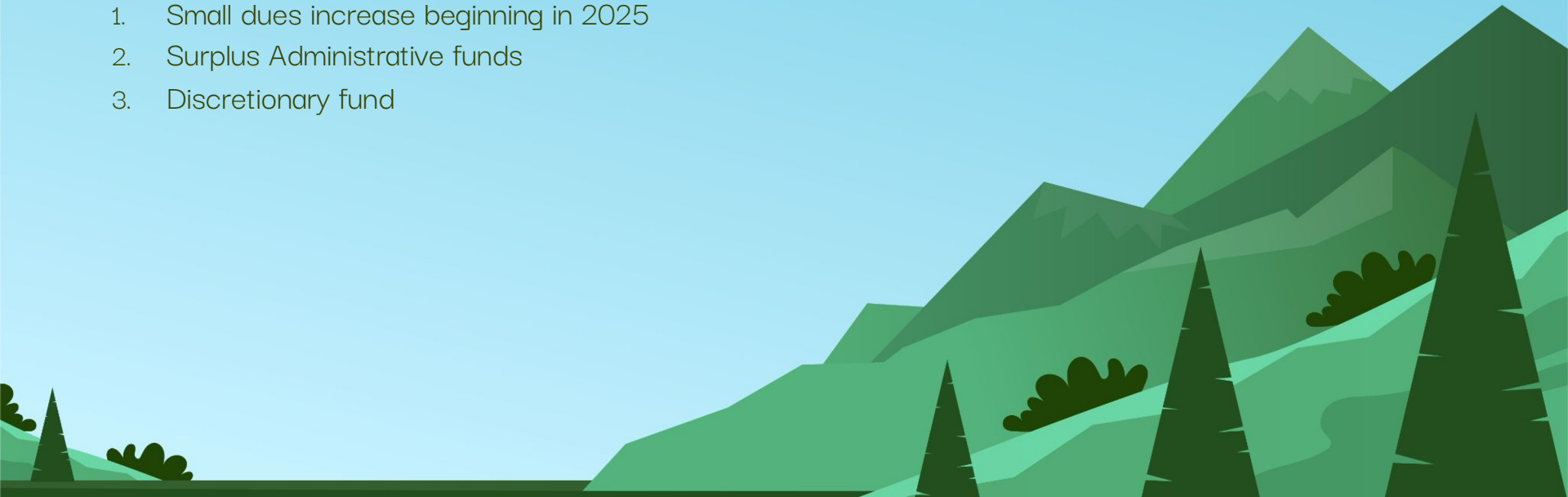




# FUNDING

AAFPO voted to contribute to the new high-speed chair lift through several sources.

1. Small dues increase beginning in 2025
2. Surplus Administrative funds
3. Discretionary fund





# ESTIMATED PROJECT COST

**\$17,700,000**

Resort's Estimate of Approximate Cost

# AAFPO'S CONTRIBUTION, OVER 15 YEARS, WILL NOT EXCEED

## \$5,230,945

**50%**

### DISCRETIONARY FUND

AAFPO will contribute  
50% of the Annual  
Discretionary Fund

**\$30**

### DUES INCREASE

Membership Dues will  
increase \$30/annually  
until funding is met,  
beginning in 2025.

**\$131K**

### ADMIN FUNDS

AAFPO will also  
contribute \$131,000 from  
the surplus Administrative  
Funds Account.

# CONCLUSION

The AAFPO Board strongly feels these improvements are in the best interest of ALL members and the Board has voted approval of this Resolution and signed the binding agreement with the Resort.